

## Secret Life: Lot 52



### LOT DEVELOPMENT

- **Min.** dimensions at ground level for build: 65 m<sup>2</sup>
- **Max.** dimensions at ground level for build: 4 % of lot surface area
- Maximum tree clearing: 5x the residence footprint

For more info, consult our [landscape and construction criteria](#)

### CHARACTERISTICS OF PROJECT

- The majority of lots have magnificent views of the surrounding mountains
- Lots of 2 acres and more (8,000 m<sup>2</sup> plus)
- Access to 3 private fishing lakes
- Tree species: maple, birch, wild cherry, beech, fir
- Ranch Mont Tremblant : property owners will become exclusive members of the [Clubhouse Ranch Mont Tremblant](#); Inn, spa, sauna, horseback riding, snowshoe, private fishing club.

To come: cross country skiing and skating rink.

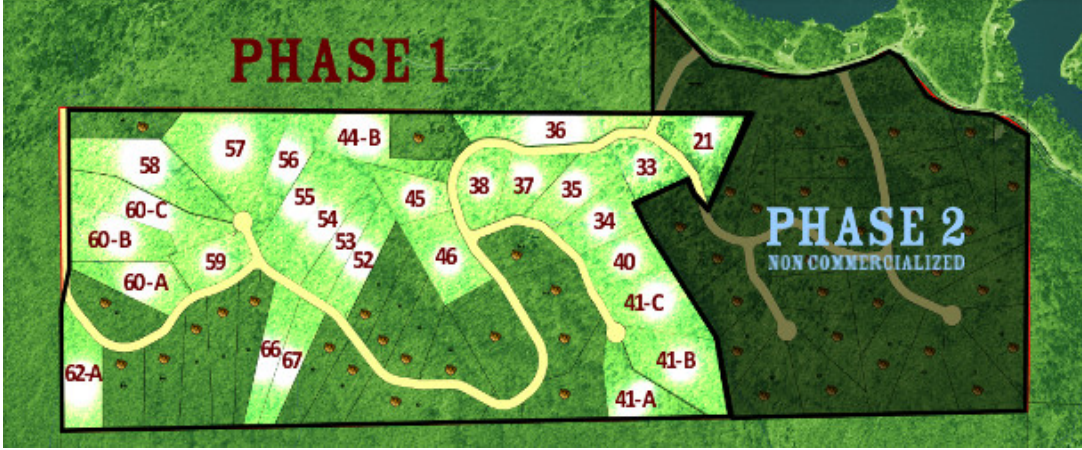
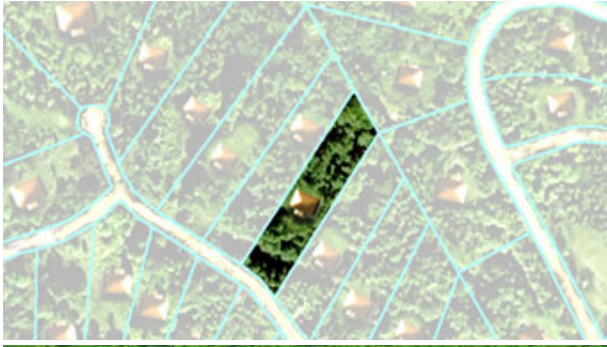
### PROJECT DEVELOPMENT

- Electric gate with rock columns
- Developed roads
- Private entrance to each lot (15m)
- Landscaped entrance to project
- Electricity phase 1: 2011/2012
- High speed internet access

**Lot plan #52, in order: illustration, technical map, general map**

### LOT DESCRIPTION

- Lot size (pi<sup>2</sup>): 86,323.3
- Lot size (m<sup>2</sup>): 8,019.7
- *Lots sizes can vary*
- Superb view of mountains
- Beautiful plateau, mature trees, close to Ranch Mont Tremblant.



DEVELOPPED & COMMERCIALIZED BY



développements  
TREMBLANT NORD